

SOFTWARE

SNAPMANAGER® FOR MICROSOFT® SQL SERVER

KEY FEATURES

Near-Instantaneous Full Backups and Rapid Restores

Reduces backup and recovery times from hours or even days to just minutes.

Storage Task Automation with Wizards

Streamlines management and automates routine tasks, enabling administrators to spend more time on value-added tasks.

On-the-Fly Scalability

Enables you to easily expand or reduce storage capacity without taking the SQL Server or NetApp storage system offline.

Enables Sophisticated Disaster Recovery Solutions

Integrates with NetApp SnapMirror® to simplify the remote replication of SQL Server data and ensure rapid disaster recovery.

Leverages Existing Infrastructure Investment

Supports flexible deployment into existing Ethernet (iSCSI) and Fibre Channel environments.

Enables Integration with Disk-To-Disk Backup Archival Systems

Integrates with NetApp SnapVault® to enable the archiving of long-term backups on less expensive disk storage.

Fast backup and recovery and high availability for Microsoft SQL Server databases.

THE CHALLENGE:

Ensure High Availability for Microsoft SQL Server Databases while Reducing Management Complexity

SQL Server is used as the database of choice for several enterprise applications today. Typically, various applications are deployed on top of SQL Server to serve different departments within an enterprise, resulting in a fragmented SQL Server deployment. The complexity of enterprise SQL Server environments increases further as the number of Windows® servers storing SQL Server databases on direct-attached storage subsystems rises. Managing numerous servers requires many resources across the various departments within an enterprise. Further, it involves the time-consuming task of backing up the databases stored on each individual device and, if necessary, restoring not only the most recent full backup but also multiple incremental backups. Incrementally scaling storage to address growing demand is time-intensive and may require SQL Server downtime, thereby reducing the availability of SQL Server-based applications and affecting both user productivity and customer experience.

THE SOLUTION:

NetApp SnapManager for Microsoft SQL Server

The NetApp solution enables significant savings from a time and resource perspective by enabling storage consolidation and simpler management across the SQL Server data farm. NetApp SnapManager for SQL Server is a data management solution that streamlines database storage while simplifying configuration, backup, and restore operations for SQL Server databases. SnapManager dramatically reduces SQL Server backup times, from hours to seconds, and makes every backup a full backup. Backups are based on NetApp Snapshot™ copies, allowing multiple databases of any size to be backed up simultaneously in seconds and requiring minimal disk space for each additional full backup. SnapManager allows organizations to recover from SQL Server outages in minutes—not hours or days—making it one of the fastest backup and recovery solutions available and delivering an industry-leading combination of availability, scalability, and reliability for SQL Server environments.

REDUCE THE COMPLEXITY OF SQL SERVER DATABASE STORAGE

Consolidating all of your SQL Server databases on scalable, highly reliable NetApp storage systems considerably reduces the number of devices you need to manage. Your administrators can back up several databases—or restore them—simultaneously and can easily expand volumes and change configurations to adapt to shifting storage requirements.

To further simplify administration, SnapManager software provides wizards to automate routine storage management tasks such as configuration and backup. Storage on the SAN appears as local disks on the SQL Server, and the management of SAN storage is accomplished through the native Windows environment. E-mail alerts can be generated for proactive SQL Server management. A readily available online event log tracks database configuration changes and presents them in an easy-to-read format that allows you to determine the optimal configuration for peak SQL Server performance.

MAXIMIZE SQL SERVER AVAILABILITY

SnapManager for SQL Server makes it possible for IT organizations to meet stringent service-level agreements by significantly reducing planned and unplanned downtime. When deployed in concert with NetApp storage systems, this powerful application minimizes scheduled downtime by enabling administrators to add storage on-the-fly while SQL Servers remain online. SnapManager reduces restore times to minutes, enhancing application availability and minimizing downtime.

To ensure that each backup is valid and available for restore, SnapManager is tightly integrated with the SQL Server application and automates the process of checking for database consistency.

Rapid database backups enable you to perform them more frequently, minimizing the exposure for data loss. SnapManager is also integrated with SnapMirror, which simplifies remote replication of SQL Server data and ensures that data can be recovered rapidly in the event of a disaster.

IMPROVE TOTAL COST OF OWNERSHIP

Consolidating database storage on NetApp devices increases storage utilization by eliminating pools of unused storage. NetApp storage provides the ability to add or resize disks on-the-fly and to store multiple online copies of SQL Server databases. Administrative overheads are greatly reduced by streamlined storage management features. Reduced application downtime lessens the risk of lost business opportunities and productivity. The ability to automatically migrate older backups to less expensive disk storage using SnapVault provides further cost savings while still providing the performance and flexibility of disk-based storage. Finally, the ability to support both Ethernet and Fibre Channel environments allows you to leverage your current network investment while deploying a long-term, highly scalable storage solution. The NetApp consolidation solution provides significant value to organizations by helping reduce costs with 116% ROI*.

SYSTEM REQUIREMENTS

SnapManager for SQL Server supports:

- Windows 2000 Server/Advanced Server
- Windows 2003 Server Standard Edition/Enterprise Edition
- Microsoft SQL Server 2000 Standard Edition/Enterprise Edition SP2
- Microsoft SQL Server 2005 Standard Edition/Enterprise Edition
- Fibre Channel or iSCSI
- SnapDrive® 4.1, 4.0, 3.2R1, 3.1.1R1, 3.2

ABOUT NETWORK APPLIANCE

Network Appliance is a world leader in unified storage solutions for today's data-intensive enterprise. Since its inception in 1992, Network Appliance has delivered technology, product, and partner firsts that simplify data management. Information about Network Appliance™ solutions and services is available at www.netapp.com.

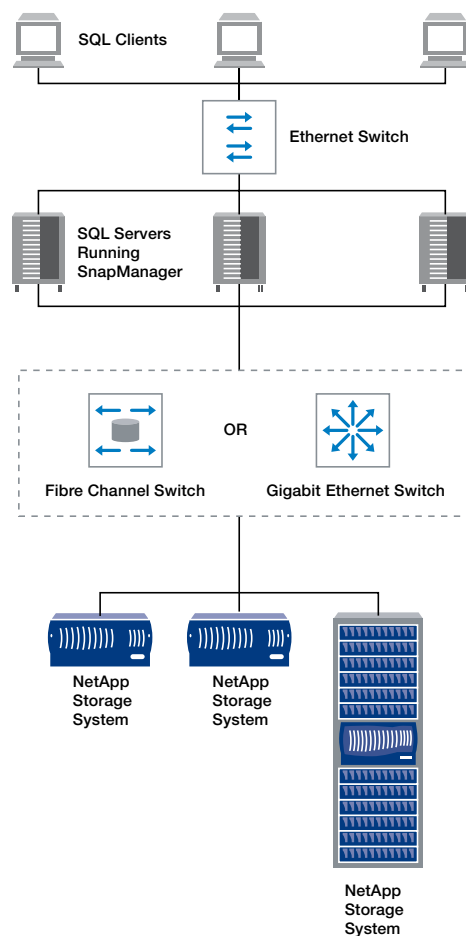


Figure 1) SnapManager in a Fibre Channel/iSCSI environment.

* Source: "The Total Economic Impact™ of Microsoft Exchange and SQL Server Storage Consolidation Using Network Appliance," Forrester Research, 2004.

