



NetApp™
Go further, faster



Software

NetApp Provisioning Manager

Increase productivity and reduce the risk of human errors with our automated provisioning solution

KEY BENEFITS

Reduce risk of data loss

You can reduce the risk of data loss due to misconfigured storage when you use our policy-based automation for storage provisioning.

Increase productivity

You can reduce the time, resources, and expertise required to perform complex SAN and NAS provisioning tasks by using our task-based workflows with automated processes.

Maximize storage resources

You can allocate storage more efficiently across resource pools when you use our policy-based automation.

THE CHALLENGE

Reduce provisioning complexities

Provisioning your company's storage resources is a complex job. There are lots of choices to make, and, given the amount of manual processes most businesses use, there's lots of room for error. And most tools used to provision storage systems don't give you much room to appropriately configure for the type of data your users and applications demand. Instead of maximizing your storage resources, you end up with poor storage utilization or, in some cases, the distinct possibility of data loss.

THE SOLUTION

Streamline provisioning with Provisioning Manager

You can increase operating efficiency and eliminate hands-on complexity by streamlining your provisioning process with our Provisioning Manager solution. Because it's easy to use, you no longer have to be concerned with the complex task of dealing with the underlying storage technologies.

Once you install our Provisioning Manager, you can:

- Apply consistent data set provisioning policies across the enterprise

- Automate complex provisioning processes
- Check policy conformance
- Pool storage resources for higher utilization
- Provision storage within the confines set by the storage administrator

REDUCE RISK OF ERRORS

Provisioning your storage is efficient and accurate with Provisioning Manager. You can proactively manage your storage infrastructure and virtually eliminate the inherent potential for human error that comes with manual management.

When you open Provisioning Manager, you see an at-a-glance dashboard that displays a variety of your data metrics, including:

- Capacity utilization
- Snapshot™ usage
- Space management events

With this information, you can create more consistent SAN and NAS resources by building policies that match the configuration of LUNs, volumes, and qtrees with their intended uses. You can then automatically apply the policies when new storage requests arrive, whether directly through

the Provisioning Manager user interface or from other applications, such as SnapDrive®. This eliminates the risk of human error for this complex task. Conversely, Provisioning Manager notifies you when storage resources get out of conformance with policies you've set, allowing you to rectify the situation before it becomes a crisis.

INCREASE PRODUCTIVITY

Provisioning Manager is intuitive and easy to use. With just a few clicks you can drill down to detailed information about your storage system. Your storage administrators can be more productive using our policy-based automation of repetitive, time-intensive tasks. And server and database administrators can perform self-service provisioning using the role-based access control on the centralized console. Because these tasks are performed from within the confines of policies set by your storage administrator, you know the system will remain stable and efficient.

With Provisioning Manager, your IT architects define the policies based on your company's business requirements.

Policies include:

- Capacity
- Storage reliability
- Space provisioning requirements
- Access mechanism
- Security settings

Once policies are defined, your administrators can create logical data sets based on the intended use of the data. As they request new storage for those data sets, the application applies the preset policies during the automated creation of the volumes, LUNs, or qtrees.

MAXIMIZE STORAGE RESOURCES

You can leverage your current infrastructure investment and free your storage administration staff for more productive tasks by automating the allocation process with Provisioning Manager. To help ensure that you maximize your current resources, Provisioning Manager includes two key features. First is the ability to thin provision storage resources so you can provide storage to your users just when they need it. Second is the use of resource pools for

more efficient aggregation of resources. This frees your administrators from worrying about which physical storage resources are the most appropriate and efficient for a given request. You place storage controllers in resource pools only once—then the system automatically selects the best resource to meet a provisioning request. As the pools become more allocated, Provisioning Manager notifies your storage administrators and suggests ways to increase available space.

MANAGE FROM A BUSINESS PERSPECTIVE

Our goal is to help you manage data from a business perspective. That's why we made Provisioning Manager a key component in our Manageability Software Family. We know your time is important, and our software increases your productivity and flexibility through its holistic approach to data management. Our NetApp Manageability Software Family features four suites with common management services, security, and role-based access controls that help application, server, and storage managers do their jobs better.

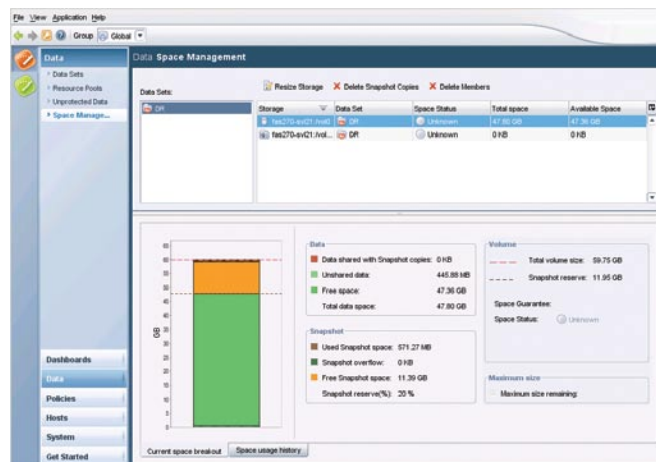


Figure 1) Provisioning Manager provides policy-based space management and reporting.

NetApp creates innovative storage and data management solutions that help you accelerate business breakthroughs and achieve outstanding cost efficiency. Discover our passion for helping companies around the world go further, faster at NetApp.com

© 2008 NetApp. All rights reserved. Specifications are subject to change without notice. NetApp, the NetApp logo, Go further faster, SnapDrive, and Snapshot are trademarks or registered trademarks of NetApp, Inc. in the United States and/or other countries. All other brands or products are trademarks or registered trademarks of their respective holders and should be treated as such. DS-2742-0308



www.netapp.com